



# ShurGreen™

## Organic Recycling



▶ **FOOD** *to* **FEED** ▶





## **360 ORGANIC RECYCLING COMPANY**

**We take pre-consumer unused human and pet food plus packaging destined for landfills and efficiently recycle them into high-quality, useful end products such as renewable energy, crop nutrition, and non-ruminant animal feed as well as repurposed packaging.**

**Our environmentally responsible process offers our customers a new revenue stream as well as a partner to support their corporate sustainability and operational efficiency goals.**

# [ MARKETS SERVED ]



PET FOOD



FROZEN FOOD



FRESH FOODS



TABLE CONDIMENTS



BAKED GOODS



COMMERCIAL MEATS



BEVERAGES



LIQUID SLUDGE



PACKAGING



DIARY



CANNED GOODS

# OUR END PRODUCTS FROM PROCESSED BYPRODUCTS

1



## Crop Nutrition From Solid Waste

Collect wet solids that are suitable for crop nutrition used to nourish and grow crops

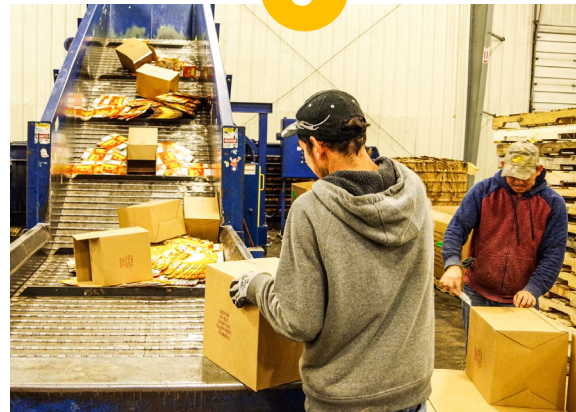
2



## Animal Feed From Recycled Organic Byproduct

Integrating organic residuals into ruminant livestock feed approved materials

3



## Certified Product Destruction

Protects your brand while limiting your liability in the marketplace

4



## Energy Into Renewable Energy

Anaerobic processes that break down organic materials for use in:

- > Ethanol
- > Biogas
- > Biofuels

# [ 360 DEGREE PROCESS ]

## Transportation

Using a fleet of diversified trucks and trailers or direct ship through rail we handle logistics from your facility to ShurGreen

## Process & Sorting

Material unloaded, separated, and sorted into packaging, liquids, and solids for rendering into final product

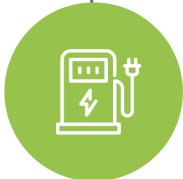
Animal Feed



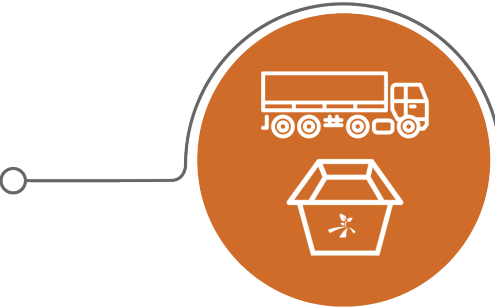
Crop Nutrition



Renewable Energy



Product Destruction



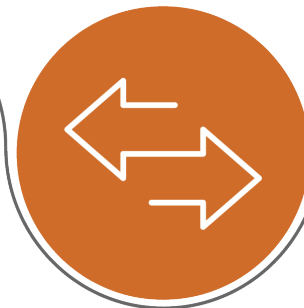
## Product Pick Up

Staged trailers with remote sensors and/or tote system are delivered and dedicated to your facility



## Product Pick Up

Trailer is scaled on-site, contents unloaded with sample taken, and analyzed, sealed, and verified



## Product Delivery

Repurposed byproducts are transported for final application



Packaging



Liquids



Solids

## CERTIFIED PRODUCT DESTRUCTION

- Certified product destruction that protects your brand while limiting corporate liability
- Featuring a Thor depackaging and separator system
- Non-hazardous organic liquids, solids, sludge, plastics, and packaging

**Trusted partner with a proven chain-of-custody and certification of destruction for your records**



**VIEW DEPACKAGER  
ANIMATION**



<https://www.youtube.com/watch?v=r-JWgaQZLPU>



## [ LIQUIDS ]

- High tech fully-automated premium drag-line and lateral-move systems for placement of liquids onto ag fields
- Center pivot installations for in-field distribution of liquid recycled crop nutrients
- Handle and repurpose poultry, meat, wet pet food, and other liquid by-product
- Multiple lagoons on site at the Ohio facility with additional locations in development



# [ COMPLIANCE ]

- ShurGreen Farms, LLC is a FSMA compliant facility, regulated and inspected by the Ohio Department of Agriculture as a feed manufacturer
- All certification requirements apply to the receipt, record keeping, destruction, and reporting practices
- Proper handling of products from pick-up through organic recycling
- Materials are properly removed from the market and destroyed/recycled to eliminate any possible downstream liabilities
- We record each process, properly ensuring a proper paper trail for your corporate records



 <p>Department of Agriculture Governor John R. Kasich • Lt. Governor Mary Taylor Director David T. Daniels</p>	<p>Division of Plant Health - Grain, Feed &amp; Seed Program 8995 East Main Street, Reynoldsburg, OH 43068 Phone: 614-728-6410 • Fax: 614-728-6412 www.agri.ohio.gov • simmons@agri.ohio.gov</p>	
<b>Agricultural License and Registration</b>		
Registrant: 93512 Shur-Green Farms LLC 9159 State Route 116 Ansonia OH 45303	Submitted For: 93512 Shur-Green Farms LLC 9159 State Route 116 Ansonia OH 45303	Page: 1
The name and address appearing on this license shall be the same on all labels and invoices for product name, brand or grade distributed in Ohio.		
<b>COMMERCIAL FEED REGISTRATION</b>		
Registered to manufacture or distribute feed in Ohio in compliance with the provisions of Section 923.41 to 923.55 of the revised code with no expiration date.		



## [ TRANSPORT ]

- Wholly-owned fleet of trucks and trailers locally, regionally, and partners nationally
  - Vacuum and insulated tankers
  - A fleet of semi-trailer style dry vans with 53-foot trailers
  - Refrigerated trailers
  - Roll-off container trucks
  - Dump trailers
  - Compactor, baler, and other specialized equipment
- Modern and well-maintained equipment
- Drivers are well-trained and bonded
- Certified truck scale by the Ohio Department of Agriculture
- Over-the-road and LTL services that are managed and scheduled to meet your needs



# [ SUSA WASH OPEN TOP TOTE CLEANING SYSTEM ]

## Primary Benefits Include

- Totes are coded and dedicated to your facility
- Can be used for dry and wet ingredients
- All are FSMA labeled to ensure compliance
- All are regularly sanitized and returned to the process

## Process Efficiencies, Features, and Benefits

- Suitable cleaning solutions are used
- Product Jam Sensing Clutch
- 304 Stainless Steel Roller Chain, 2082 Oversized Roller
- Variable Frequency Drive - Motor Drive
- FPM 0.50 Minimum / 15.0 Maximum
- The rated load is 50 lbs. per square foot

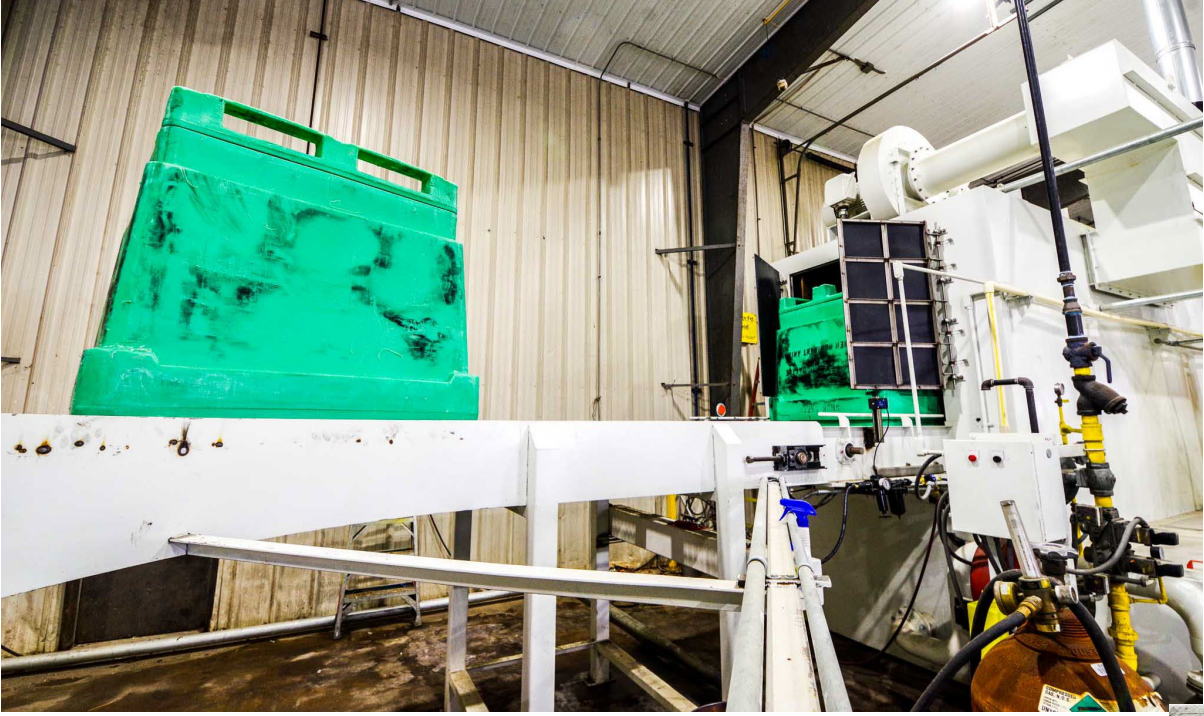


## Performance

- 40 Bins per hour
- Decontamination of dirt and foodborne pathogens while cleaning and removing, bacteria



# SUSA WASH OPEN TOP TOTE CLEANING SYSTEM



MAINTENANCE SCHEDULE	
<p><b>DAILY PROTOCOL</b></p> <ol style="list-style-type: none"> <li>Clean pump suction screens</li> <li>30° return conveyor – check lube level</li> <li>Clean lid washer collection basket</li> <li>Wipe all photo eye reflector lens covers</li> <li>Check Chemical drum levels</li> </ol> <p><b>WEEKLY</b></p> <ol style="list-style-type: none"> <li>Drain pre-wash tank &amp; clean &amp; refill</li> <li>Clean inlet dump conveyor</li> <li>Clean load side entrance conveyor</li> <li>Clean lid washer fans</li> <li>Flush lid washer tank conveyor ends</li> <li>Inspect blower suction screens Bin &amp; Lid Washer</li> <li>Clean mesh filter cartridge</li> <li>Inspect swivel nozzles (Lid Washer) for plugged nozzles</li> <li>Inspect swivel nozzles (Bin Washer) for plugged nozzles</li> <li>Swivels turn nozzles plugged</li> <li>Inspect air inlet connections</li> <li>Clean inside wash cabinets</li> </ol> <p><b>MONTHLY</b></p> <ol style="list-style-type: none"> <li>Inspect / Clean cooling fans on motors</li> <li>Swivels, conveyor bearings, motors (pump, fans)</li> <li>Clean burner blower suction fan screen</li> <li>Grease all tank fittings</li> <li>Inspect conveyors for entrapment</li> <li>Drain wash tank, clean (oil waiting to confirm) &amp; refill</li> <li>Spray all shafts and adjusting nuts with lubricant (MCO) or equivalent</li> <li>Inspect drive chains Pre-Wash, Wash Swivel headers, Bin turnover, lid washer drive</li> </ol>	<p><b>Programa de mantenimiento</b></p> <p><b>PROTOCOLO DIARIO</b></p> <ol style="list-style-type: none"> <li>Crabas de succión de bombas limpias</li> <li>Transportador de retorno de 30 grados - verifique el nivel de lubricación</li> <li>Cesta de recogida de lavadoras de tapa limpia</li> <li>Limpie todas las cubiertas de lentes reflectoras de ojos fotográficos</li> <li>Compruebe los niveles de tambor de productos químicos</li> </ol> <p><b>SEMANAL</b></p> <ol style="list-style-type: none"> <li>Drenar el tanque de prelavado y limpiar y rellenar</li> <li>Transportador de descarga de entrada limpio</li> <li>Transportador de entrada lateral de carga limpio</li> <li>Tanque de lavado de tapa limpia</li> <li>Extremos del tanque de lavado de tapa entrado</li> <li>Inspeccione las crabs de succión del ventilador en el contenedor y la lavadora de tapa</li> <li>Cartridge de filtro de enjuague limpio</li> <li>Inspeccione las boquillas giratorias (caranola de tapa) en busca de boquillas tapadas</li> <li>Inspeccione la lavadora de contenedores de boquillas giratorias para detectar boquillas tapadas</li> <li>Boquillas giratorias tapadas</li> <li>Inspeccionar las conexiones de la cuchilla de aire</li> <li>Limpie el interior de los armarios de lavado</li> </ol> <p><b>MESES</b></p> <ol style="list-style-type: none"> <li>Inspeccionar / Limpiar ventiladores de coils en los motores</li> <li>Caranolas, cojinetes transportadores, motores (bomba, ventilador)</li> <li>Pantalla del ventilador de succión del ventilador del quemador</li> <li>Engrase todos los accesorios zank</li> <li>Inspeccionar los transportadores para el entrapamiento</li> <li>Lavar el tanque de drenaje, limpiar y rellenar</li> <li>Rociar todos los ejes y tuercas de ajuste con lubricante (MCO) o equivalente</li> <li>Inspeccionar cadenas de accionamiento Prelavado, cabezales giratorios de lavado, rotación de contenedores, accionamiento de la lavadora de tapa</li> </ol>

# [ BAKER RULLMAN ROTARY DRYER SYSTEM ]

## Primary Benefits Include

- Energy efficient, high-performance rotary dryers with a global reputation in ultimate reliability
- All three cylinders in the BR system are triple-pass dryer systems and are full-length
- Trunnion rollers are made from Class 50 cast iron with a minimum roller face hardness

## Process Efficiencies

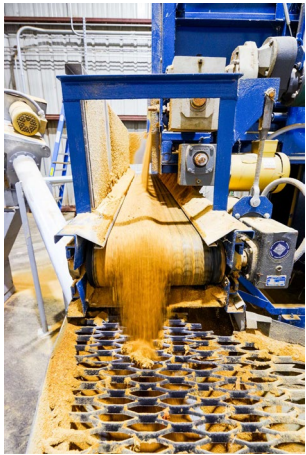
- Use less fuel per ton of product than many other drum dryers and do so in significantly less space
- Better heat utilization created by longer residence times, robust temperature control, and drum insulation
- Design protects your product from under or over drying
- Reduced Volatile Organic Compounds (V.O.C.) emissions



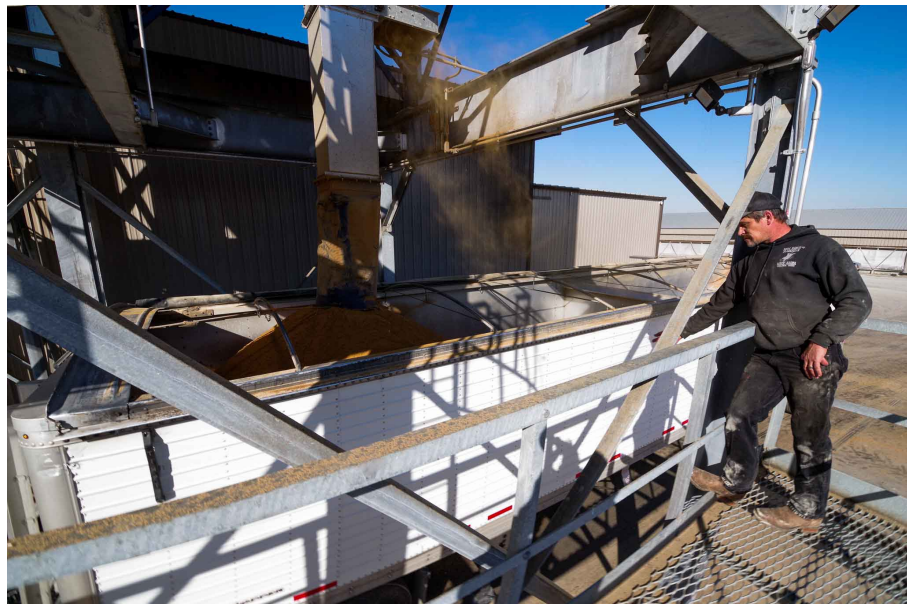
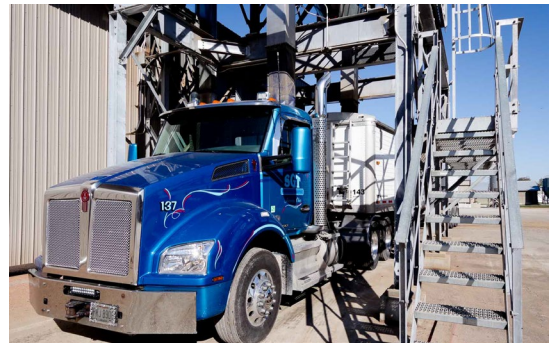
## Performance

- Triple-Pass Technology remains the superior dehydration system by optimizing operating costs, efficiency, and end-product consistency

# BAKER RULLMAN ROTARY DRYER SYSTEM



# ROTARY DRYER FEED LOAD OUT BINS



# [ DYNAMIC RENEWABLES ]



## Renewable Energy & Clean Water Solutions

- Full-service company that provides leading-edge waste recovery solutions
- Landfill diversion, anaerobic digestion, nutrient concentration, and water treatment
- Deliver turnkey renewable energy and clean water solutions dispose of organic waste to impact the economy in environmentally friendly ways
- Dynamic Renewables works with multiple national and global food companies



### Tri-Cross Dairy

This digester facility is a freestanding project. That means that the two digesters on the property will be utilizing the manure from the 5,000 cows within the facility.



### Victory Farms

This digester facility is a freestanding project. That means that the two digesters on the property will be utilizing the manure from the 5,000 Jersey cows within the facility.



# [ RENEWABLE CARBON-NEUTRAL FUELS ]

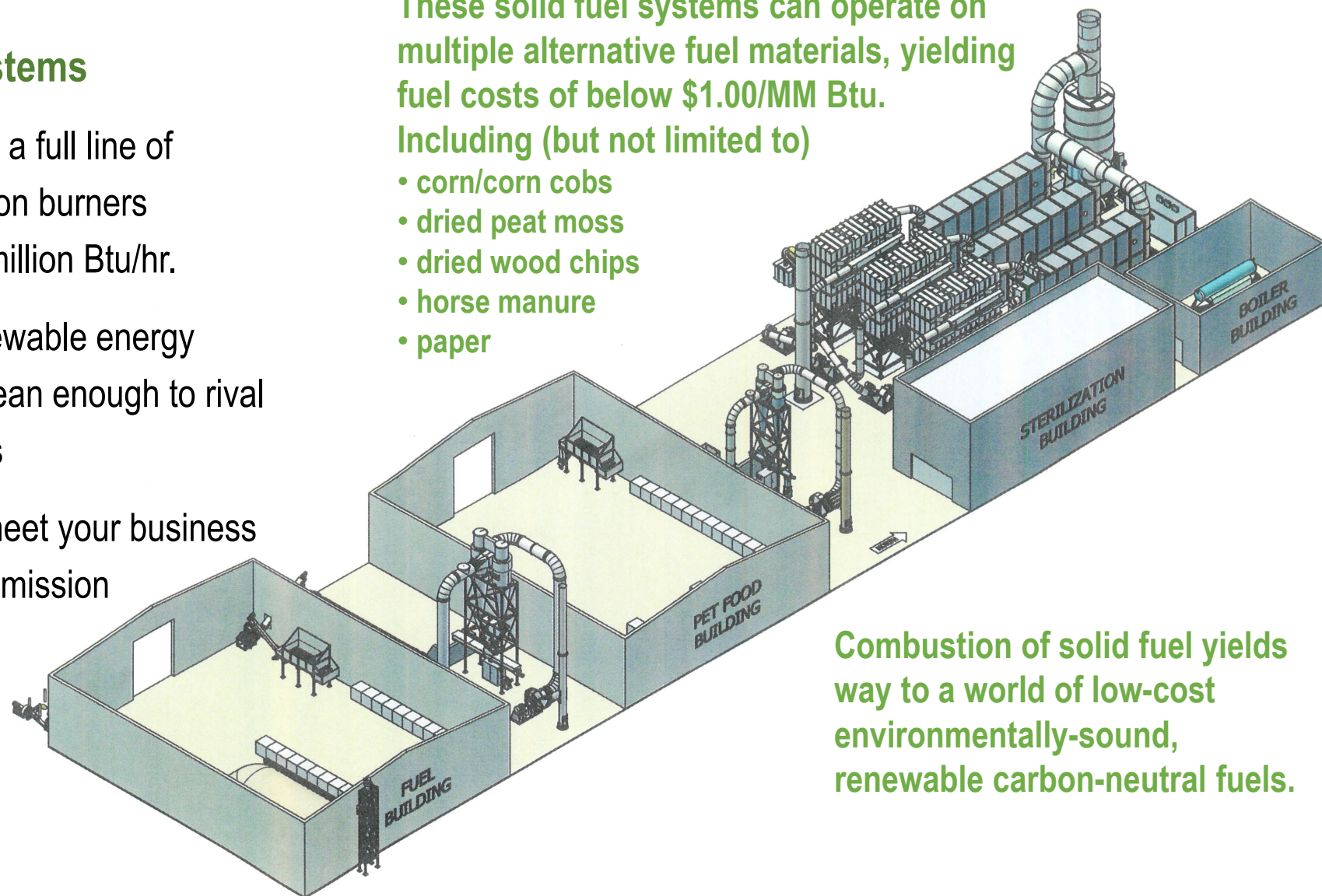
## Solid Fuel Combustion Systems

- The ONIX Corporation offers a full line of industrial solid fuel combustion burners rated to a maximum of 120 million Btu/hr.
- Cyclonic burners offer a renewable energy alternative with emissions clean enough to rival natural gas burner emissions
- Customized programs that meet your business objectives and comply with emission standards

These solid fuel systems can operate on multiple alternative fuel materials, yielding fuel costs of below \$1.00/MM Btu.

Including (but not limited to)

- corn/corn cobs
- dried peat moss
- dried wood chips
- horse manure
- paper



Combustion of solid fuel yields way to a world of low-cost environmentally-sound, renewable carbon-neutral fuels.





## [ **AUTOMATED TRUCK WASH** ]

### Biosecurity Truck Wash System

- Viruses such as HPAI and swine fever have the ability to devastate the food industry
- Proper biosecurity fleet washing systems help prevent the spread of disease and shorten the length of time disease is spread
- Trucks are washed and sanitized inside and out
- Truck washing reduces maintenance costs and extends the life of the vehicle
- Protect your business from avian influenza and other pathogens
- Certification of wash provided

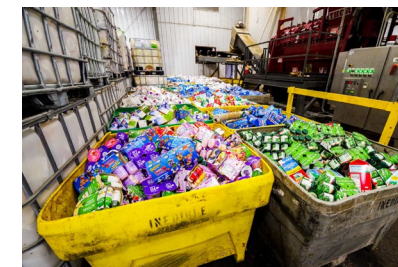
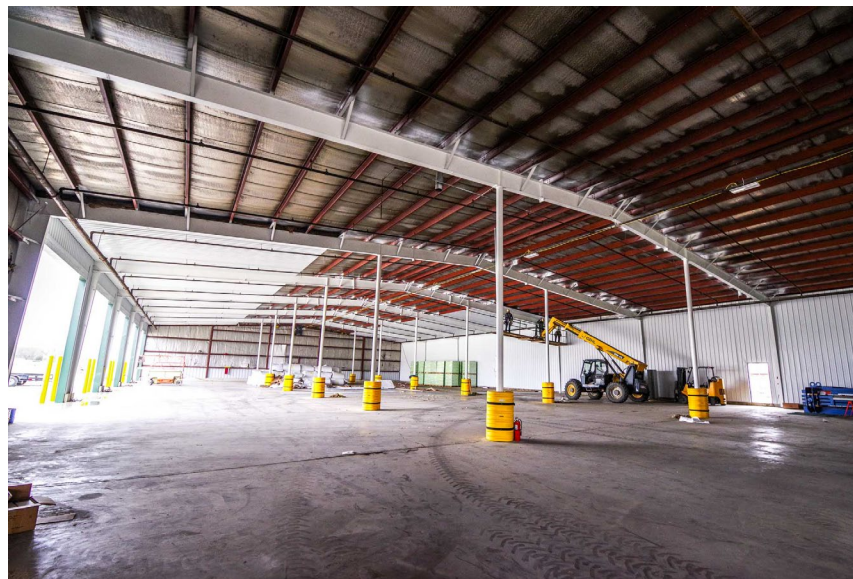
Our biosecurity system will thoroughly clean the undercarriage, wheels, chassis, tractor and trailer of the vehicles and then thoroughly apply a sanitizer to the sides and undercarriage of the vehicle.



# [ GROWTH & EXPANSION ]

## Plants 2 & 3

- Significant expansion including a 40,000 warehouse and several additional buildings on 350 acres in Ansonia, OH
- Coming close to completion, plant two will house a second Thor depackaging machine, storage, and other equipment as they come online
- Bio Security truck washing facility





## [ THE PERFECT SYNERGY ]

Intrinsic understanding, deep expertise, leadership, innovation, and experience

Pre-consumer unused human and pet food plus packaging

Strategic planning to implementation to compliance and tracking

Comprehensive services across all waste streams segments

Trusted compliance, chain of custody, high-level tracking, and reporting

Family-owned and operated using good old-fashioned horse sense





**thank you**

**ShurGreen Farms, LLC**

***Rick Kremer***

**1 937-547-9633**

[rick.kremer@shurgreenfarms.com](mailto:rick.kremer@shurgreenfarms.com)

<https://www.shurgreenfarms.com>